

February 16, 2022 6 p.m.

# Proposed West Bus Compound

## Planning Community Meeting

Welcome! This meeting will begin shortly.



**Orange County  
Public Schools**

# Proposed West Bus Compound Meeting Agenda

February 16, 2022

- Welcome – Melissa Byrd, School Board Vice Chair
- Introductions – Lauren Roth, Facilities Communications
- Bus Compound Proposal:
  - Drew HS history – Jessma Lambert, Facilities Director, Construction Planning
  - Transportation Best Practices – Bill Wen, Senior Director, Transportation
  - Real Estate – Jad Brewer, Staff Attorney, Planning & Real Estate Management
  - Sustainability – Jennifer Fowler, Director, Environmental Compliance & Sustainability
  - Proposed Site Plan – Mo Arthur, OCPS PM Team Design Manager
- Questions and Answers

***Welcome Message from  
District 7 Board Member  
Vice Chair Melissa Byrd***



# History of Charles R. Drew High School

- 1st -12th grade school for Black children in Winter Garden, Oakland, Tildenville and Windermere from 1956 to 1968
  - The first graduating class in 1957 had 14 students
  - The last class graduated in 1969
  - The school was located on East Story Road at the current OTC – West Campus
- MASCOT: Wildcats
  - COLORS: Blue and gold
  - CLASS MOTTO: “We are crossing the river, the sea stands before us.”



# Best Memories from Alumni

- Clara Davis

*“My best memories of Drew High were being in the band and traveling to out-of-town football games, playing in the band on Friday night at home during football season and playing in concert band during the off season. I looked forward to playing at graduations.”*

*Of course, the friendship, for some, extended from kindergarten.*



# Best Memories from Alumni

- Addie Grier

*“Friday night football, traveling with the basketball team as a statistician and singing Supremes songs before homeroom with my girls.”*



# Commemorating Drew HS

- OCPS is researching ways to remember the school's storied history and significance in the community:

- Historical Marker
  - Sign commemorating people, place or an event
- Commemorative Display
  - History-focused case or shadow box in new facility
- Other options?

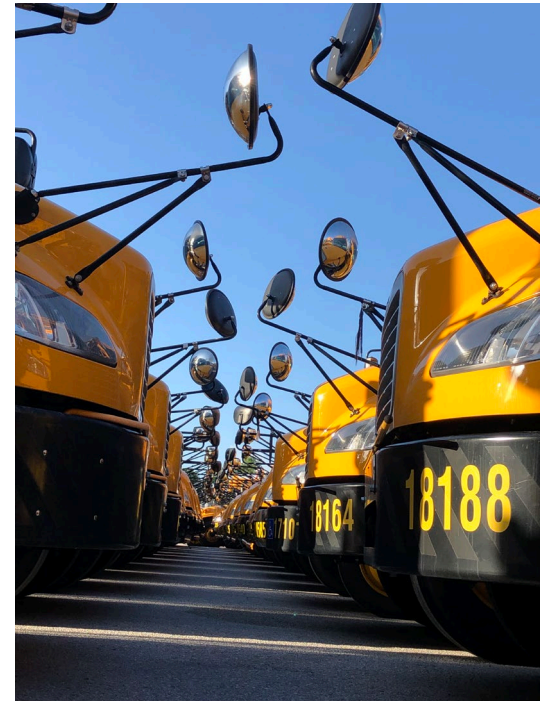
# Location Criteria for Transportation Sites

- Transportation facilities should be located close to service areas to reduce deadhead miles (miles without transporting passengers)
- Buses and drivers serving West Orange County are driving many unnecessary miles to the Pine Hills facility for service and parking
- Reducing deadhead miles reduces environmental impact
- Only buses needed for the service area would be located there
- Transportation facilities should have maintenance and fueling capabilities

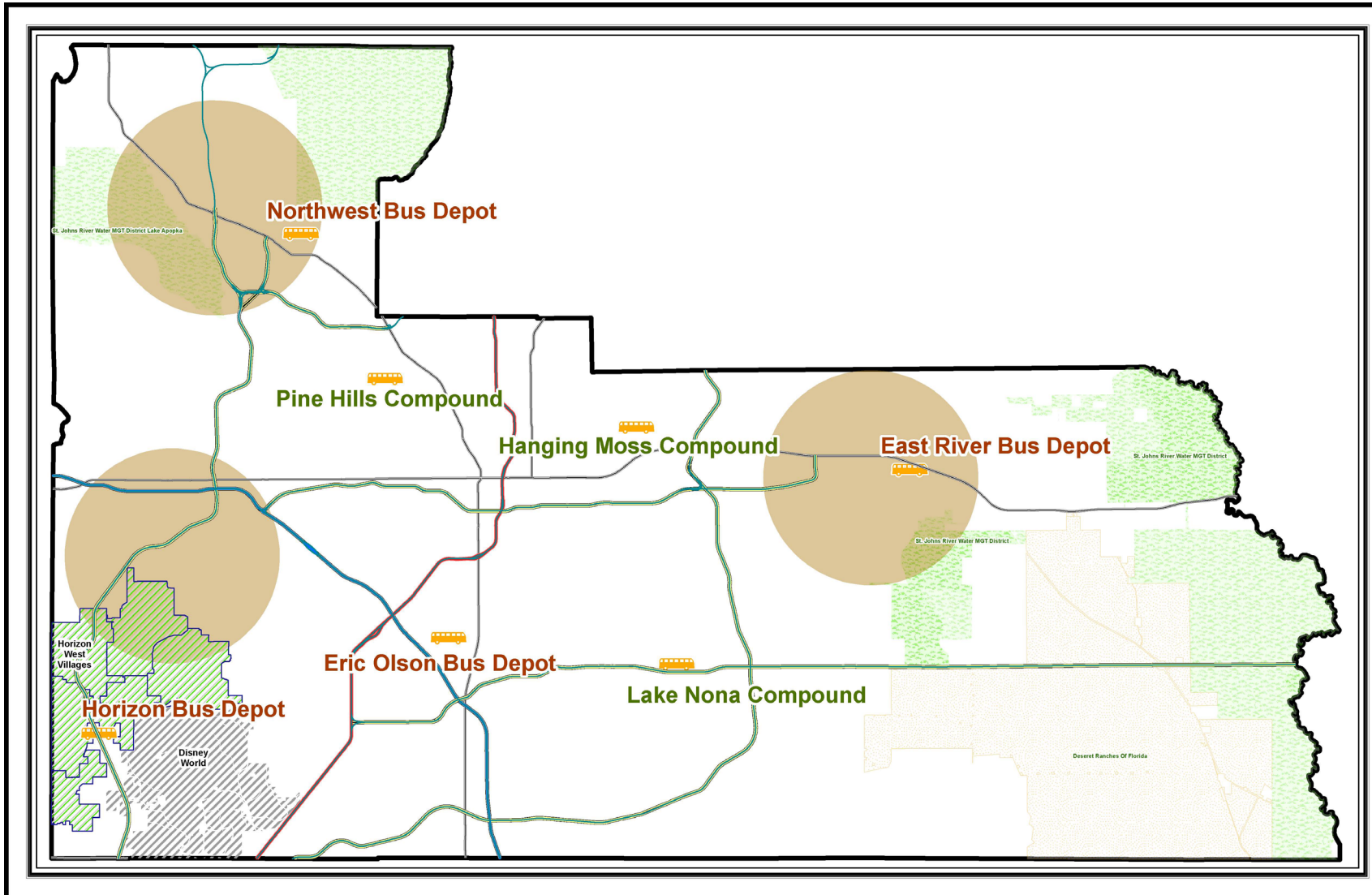


# Why a bus compound in the West?

- 2011 study by national student transportation consulting firm TransPar outlined need for bus compounds in three growing parts of the county
- 2020 OCPS analysis reaffirmed the need
- West Orange County is identified as needing a compound in both analyses
- New site would reduce operating costs by about \$1.26M/year, including fuel, staff costs, maintenance and replacement due to wear and tear on the buses

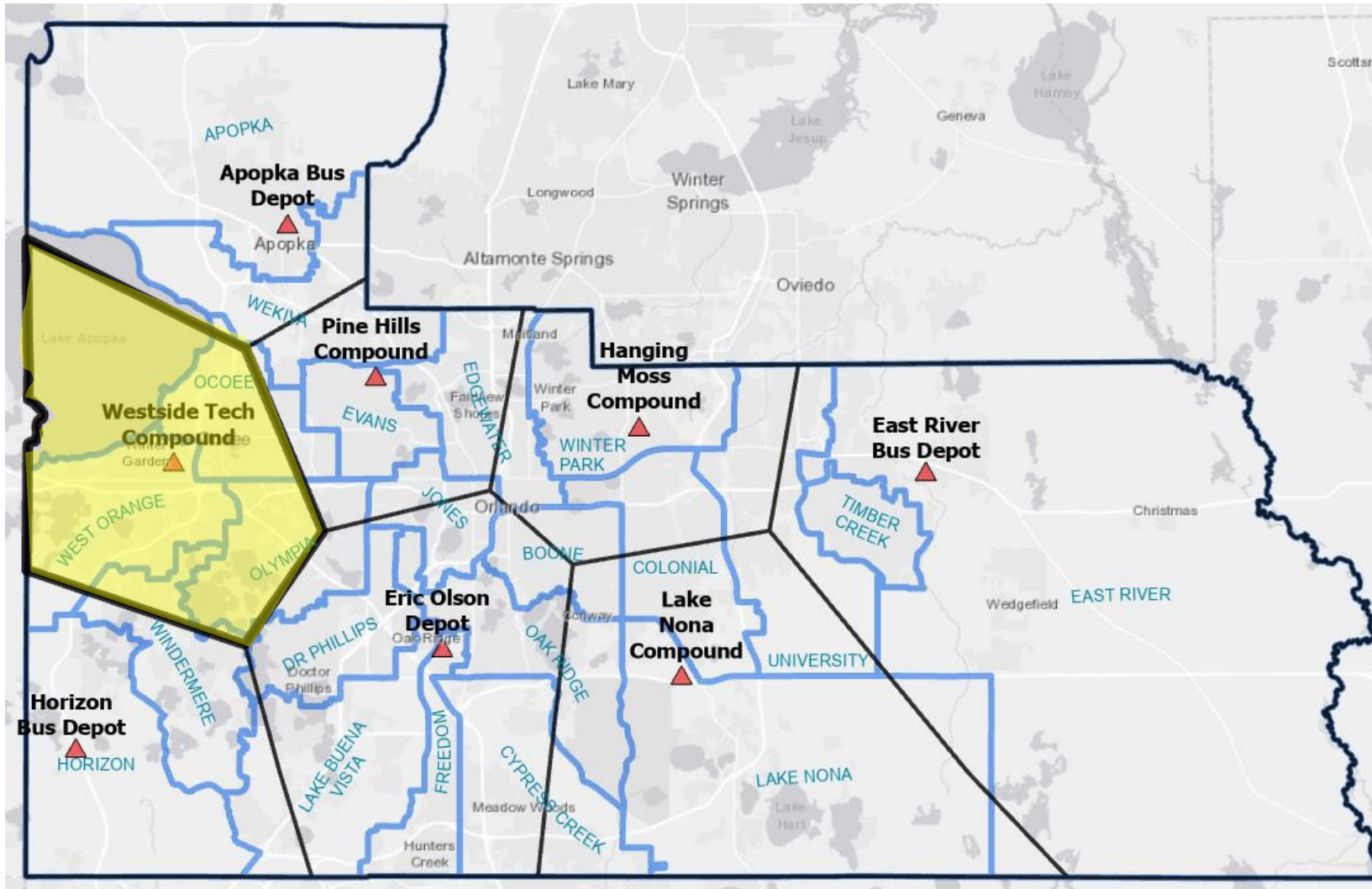


# Existing & Proposed Transportation Facilities



- 3 Compounds
- 4 Depots
- 70 new schools since 2000
- Compounds needed in brown circles

# Anticipated Service Area

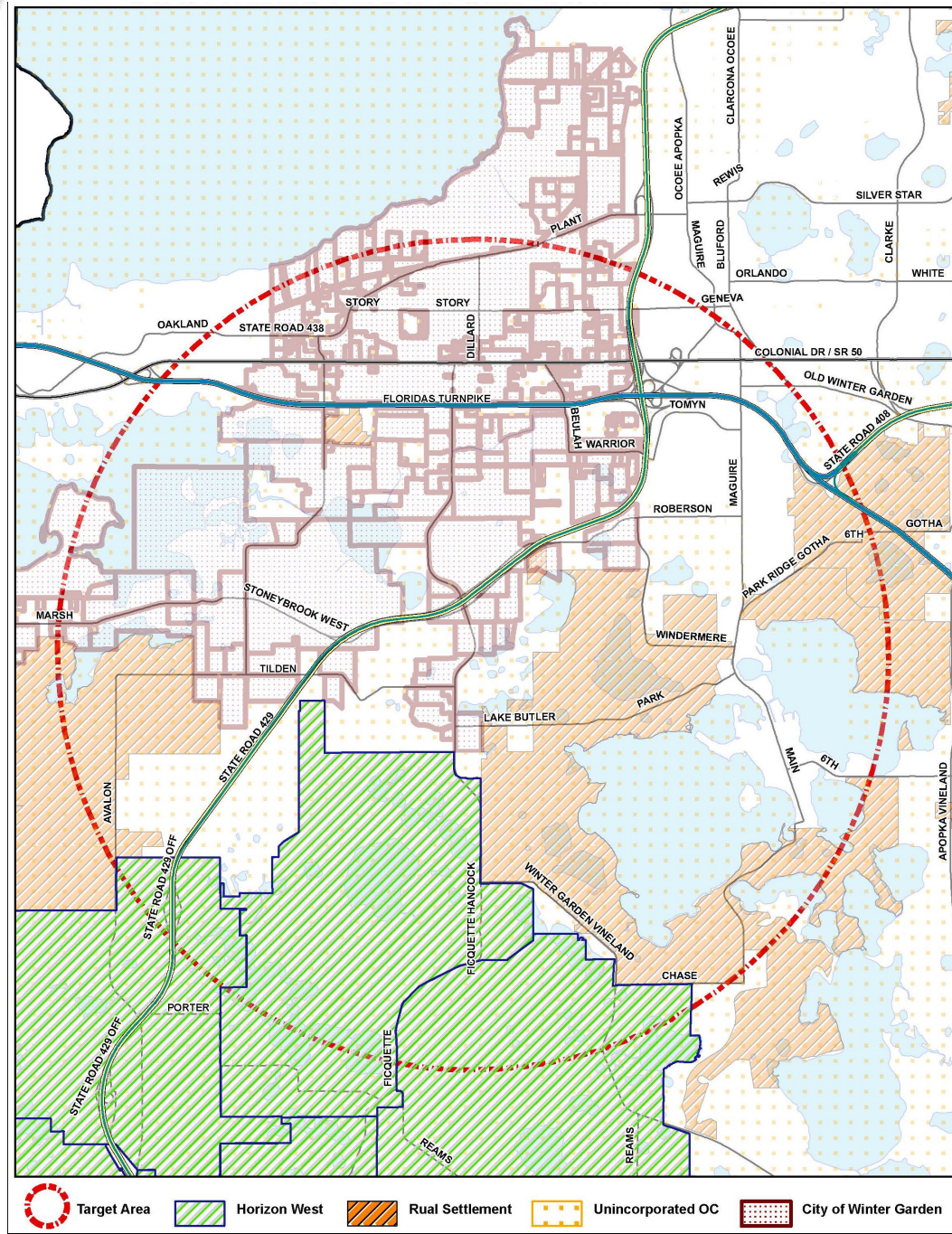


- Compound would serve about 17 schools in the Winter Garden/Ocoee area
- These buses serve about 20,000 existing local student bus riders

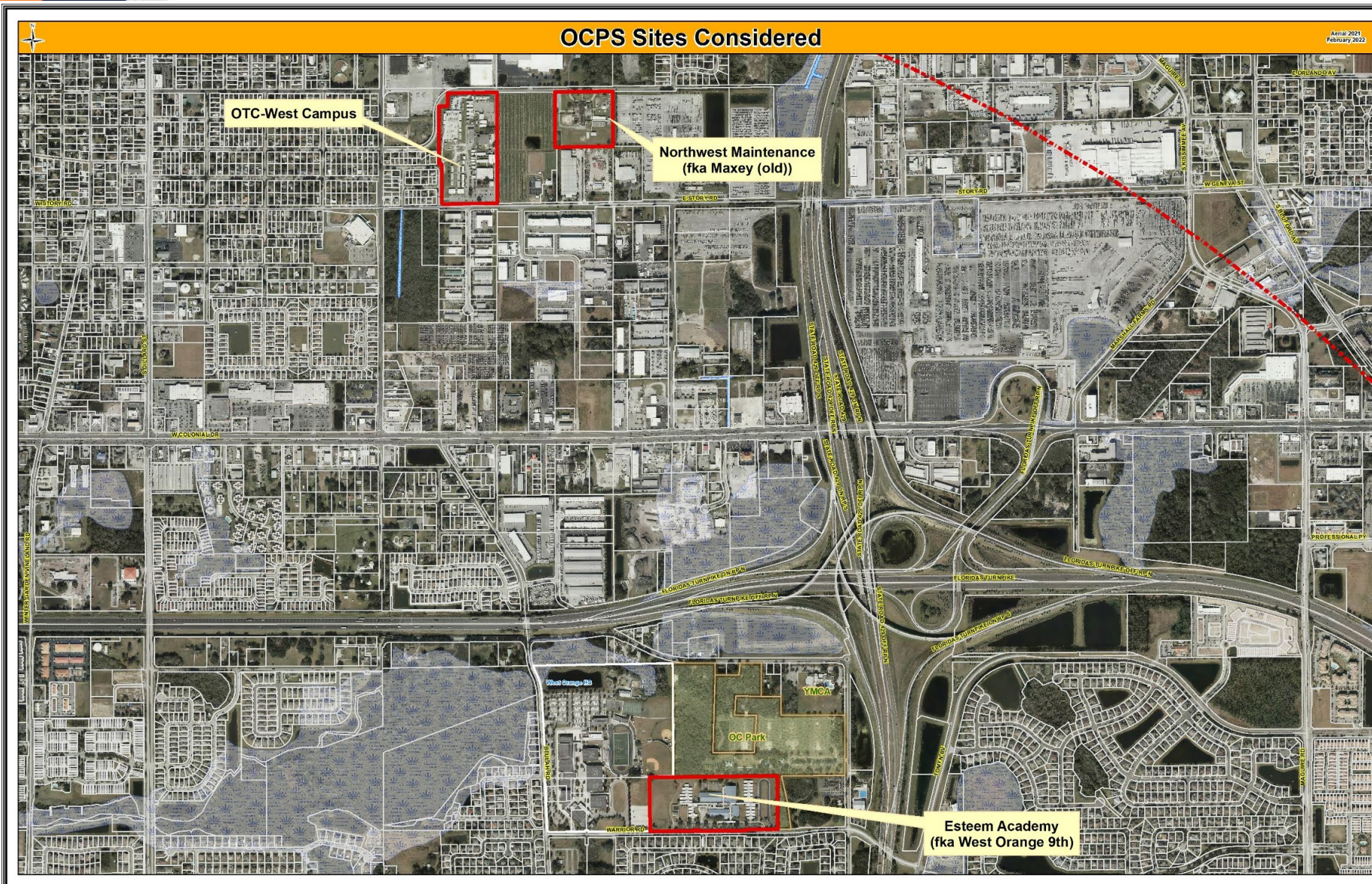


# Target Area

- Winter Garden/Ocoee area
- Proximity to major roads and highways
- Site size of about 20 acres







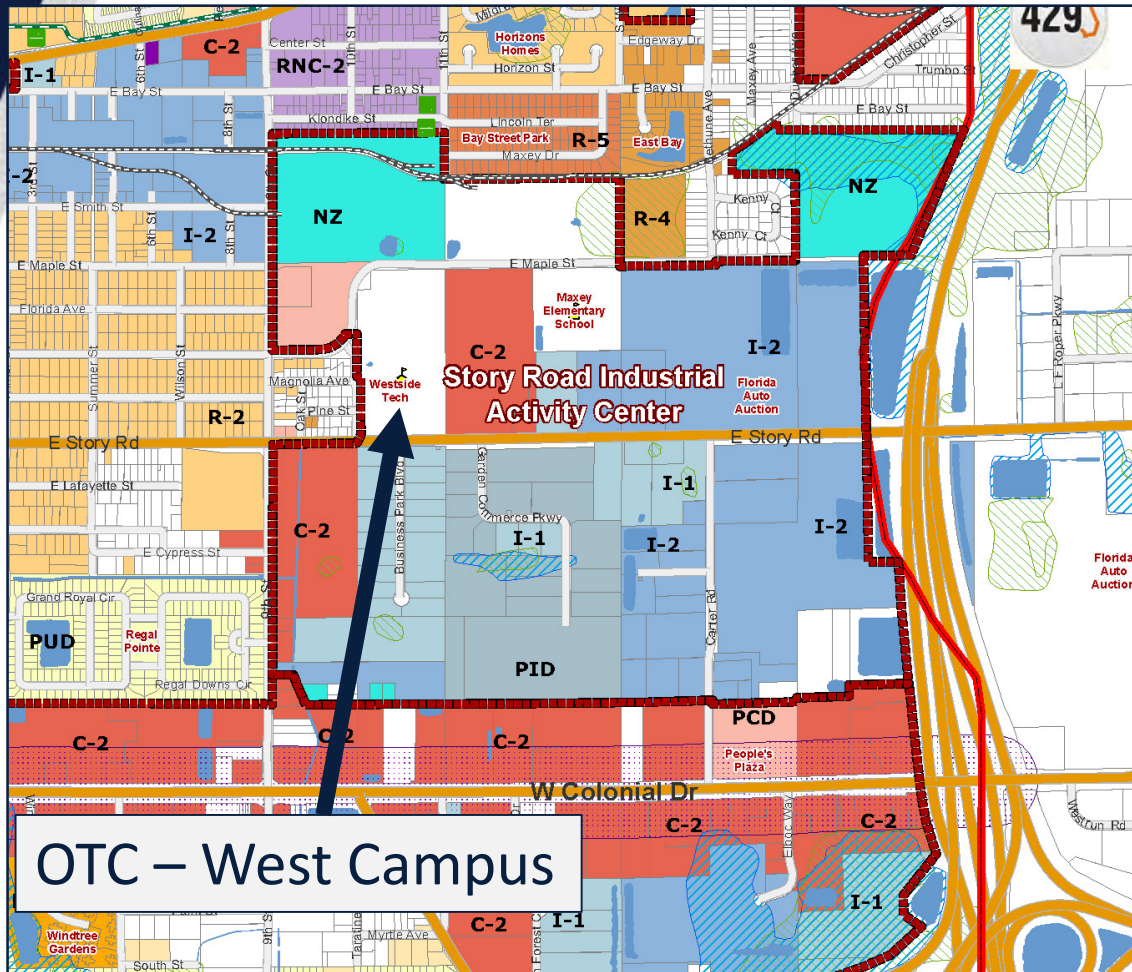
# Sites Considered

- OTC-West Campus – available in 2024
- Old Maxey ES – insufficient size
- West Orange 9<sup>th</sup> Grade Center – land use restrictions
- Seeking alternative ideas from our municipal partners



# OTC – West Campus

- 18.8 acres (site outlined in red)
- OCPS owns the property and it is large enough to accommodate a bus compound
- A bus compound is consistent with the county's "Institutional" future land use designation for the site
- The site is within Winter Garden's Story Rd. Industrial Activity Center
- It is close to major roadways







# Site Context

- Site has industrial uses on North, South and Northwest sides
- Site has agricultural use on East side
- Existing residential access from the Southwest would be removed

# Sustainability



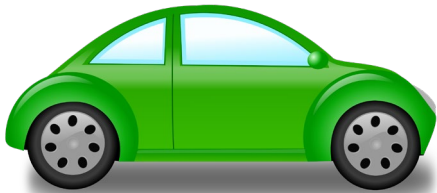
- OCPS Sustainability Plan – Transportation:
  - Decrease Fossil Fuel Usage
    - Increase efficiency to minimize deadhead miles over live miles
    - Average age of buses is less than 5 years
      - Must be inspected every 30 days as required by FDOE
      - Buses meet current, strict EPA emission standards
  - Evaluate alternative fuels and electric vehicles



# Sustainable Impacts



- Bus Compound will result in a reduction of 309,096 deadhead miles per year



This is equivalent to 52 round trips across the United States

- Reduction in deadhead miles saves 44,157 gallons of diesel fuel per year

# Sustainable Impacts



- Reduction is equivalent to 450 metric tons of CO<sub>2</sub> avoided



Or 54,739,191  
smartphones charged



Or energy to power  
52+ houses for one  
year

- Greenhouse gas emissions reduction is equivalent to

97.9 cars driven  
for one year



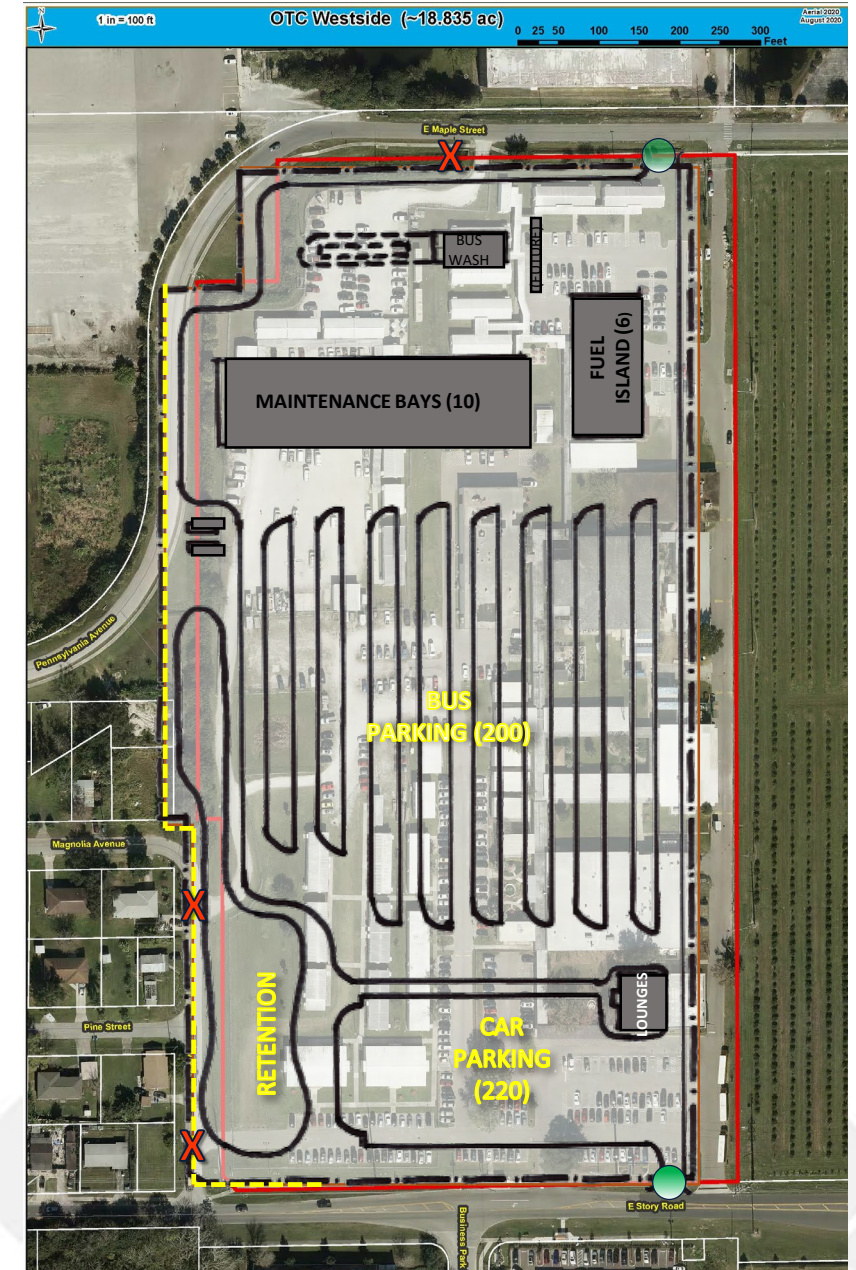
Or 1,130,939 miles driven by  
car or 188 round trips across  
the U.S.

# Details of Bus Compound Proposal

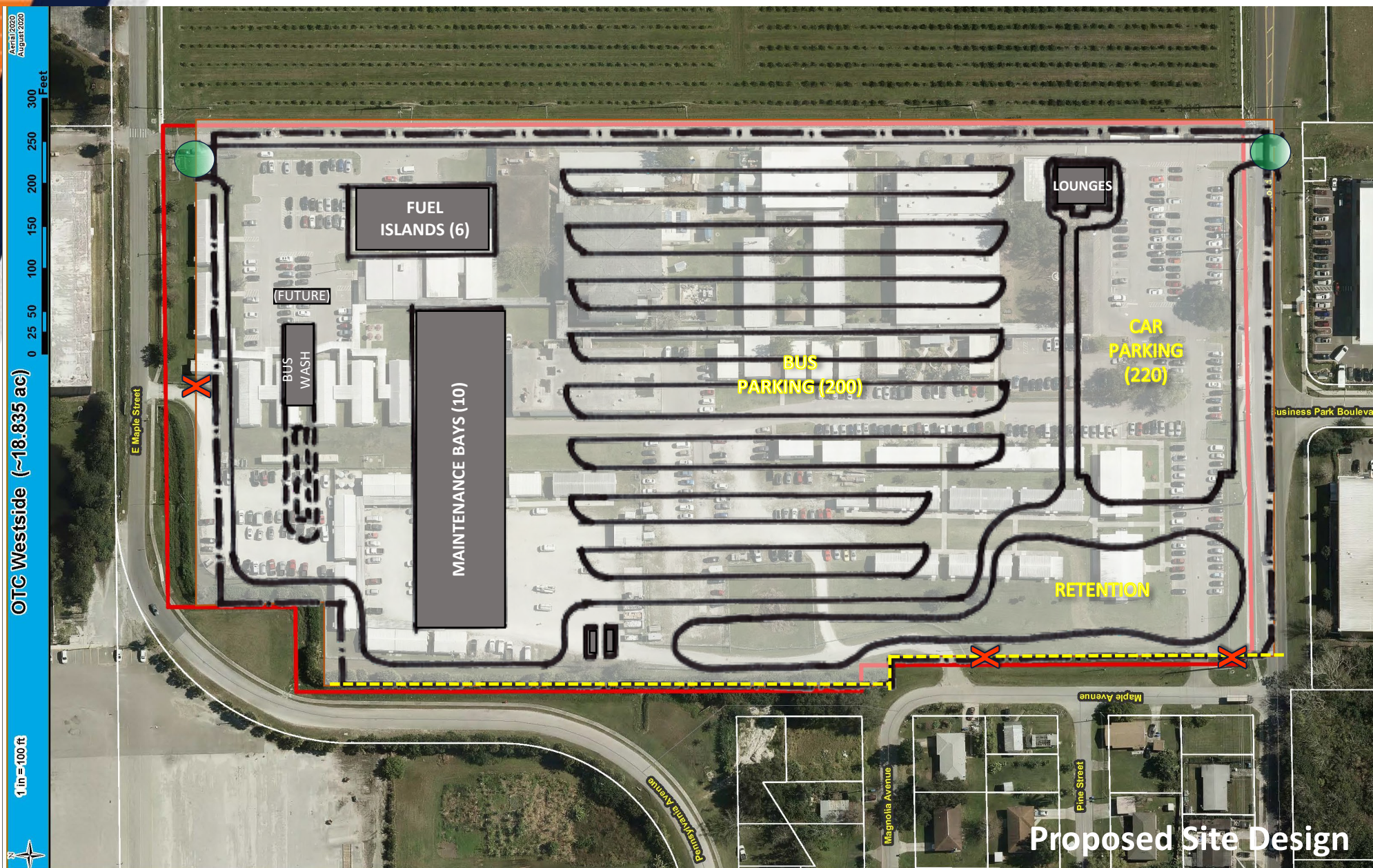
- Maximum Capacity: 200 Bus Parking Spaces
  - Enrollment projections will dictate how many spaces are actually utilized
- 10-Bay Fully Enclosed Repair Facility
  - Will repair school buses and OCPS fleet vehicles
- 6-Pump Fuel Island
  - Above ground fuel tanks
- Office building (existing)
  - Administrative offices, drivers lounges, associated parking

# Proposed Site Design

- Primary access from E. Story Road
  - Emergency-only access from E. Maple St.
- Maple Avenue access points will be removed
- Maintenance bays will be located as far north as possible
- Main bay doors would face north
- Retention pond buffer
- 8-foot barrier wall along western perimeter







# Parking

- Dark-sky friendly parking lot
- Zero-glare light design to eliminate light spill to adjoining areas



# Horizon HS Bus Depot



- Newest OCPS bus facility
- Up to 75 buses can park in a depot at Horizon HS
- Opening in 2022
- This depot will serve the Horizon West area

# Example Barrier Wall

- This 8-foot wall at the Hanging Moss Bus Compound separates the property from nearby residences





# Bus Compound Example Spaces



Fueling Depot – Pine Hills Compound



Maintenance Bays – Pine Hills Compound



# Bus Compound Example Spaces



Bus Maintenance Bays – Pine Hills Compound



Bus Wash Building – Pine Hills Compound

# Exteriors



Bus Parking – Pine Hills Compound



Offices – Pine Hills Compound



# Neighborhood Impacts

- Hours of Operation – 4:30 a.m. to 9:30 p.m.
- In the early morning and evening hours, OCPS is committed to restricting operations in the repair bays



# Proposed Traffic Impacts

- A traffic impact analysis was performed at peak travel times
- Several bus routing options were considered
- Various roadway infrastructure improvements would be instituted based on the final recommended routes
- All options provide for acceptable traffic level of service per the Highway Capacity Manual and the City of Winter Garden's adopted comprehensive plan

# Jobs

- 150+ positions

Job Type	Starting Pay
Fleet Tech I	\$14.85/hr
Fleet Tech II	\$16.13/hr
Fleet Tech III	\$17.74/hr
Fleet Tech IV	\$19.62/hr
Drivers	\$13.24/hr
Bus Monitors	\$11.29/hr
Administrative staff	\$10.75/\$11.85/hr

# Potential Next Steps

- If no alternate site is found, OCPS would request a zoning change to permit the transportation compound use on the property
  - R-2 (Residential District) to I-1/I-5 (Industrial District)
  - Approximately a 3-4 month process



# Project Goals

- Commemorate Drew HS
- Minimize environmental impacts
- Improve efficiency
- Be good neighbors
- Create jobs
- Save taxpayer dollars
- Meet student needs



**How can OCPS be a good neighbor?**

**How can OCPS best serve students and be a good steward of public dollars?**



# Questions and Answers





**Thank you for attending this meeting.**